

5401 WESTERN AVE. WASHINGTON, DC

A PLANNED UNIT DEVELOPMENT

OWNER/DEVELOPER

STONEBRIDGE

ARCHITECTS

SHALOM BARANES ASSOCIATES

LANDSCAPE ARCHITECT

EDAW INC.

LAND USE COUNSEL

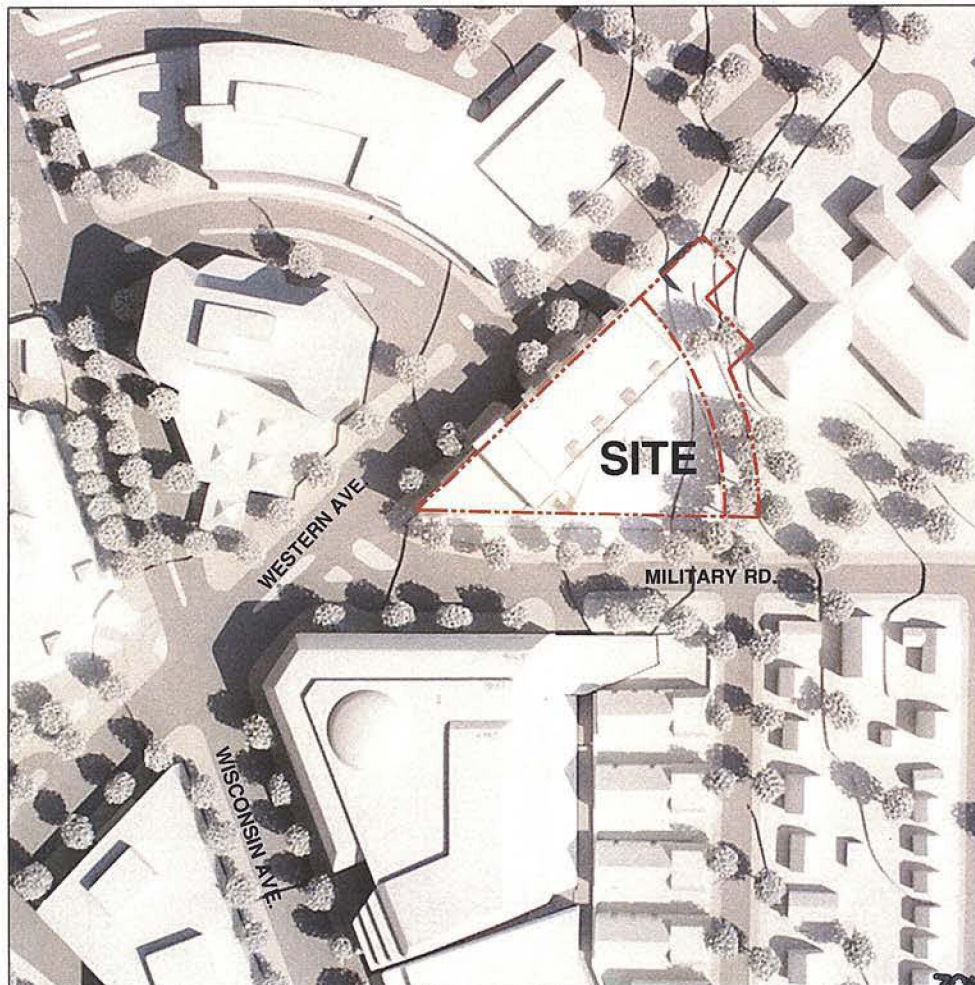
HOLLAND & KNIGHT, LLP

TRAFFIC CONSULTANT

O.R. GEORGE & ASSOCIATES

SUPPLEMENTARY PRESENTATION MATERIALS.

NOV. 14, 2002



ZONING COMMISSION
District of Columbia
ZONING COMMISSION
District of Columbia
Case **NO. 02-17**
EXHIBIT NO. 147
Exhibit

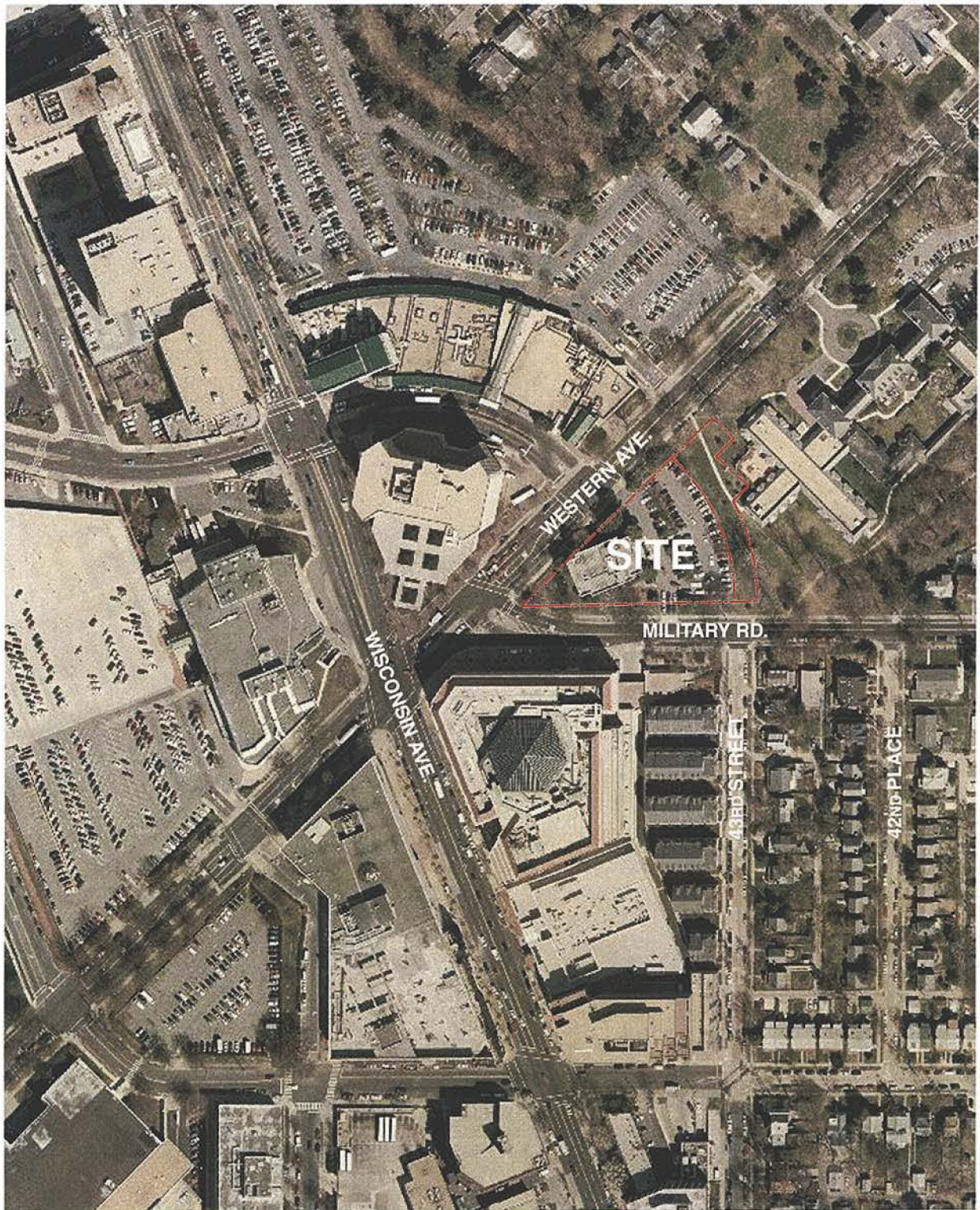


5401 WESTERN AVE.

WASHINGTON, D.C.

STONEBRIDGE

SHALOM BARANES ASSOCIATES



5401 WESTERN AVE.
WASHINGTON, D.C.

STONEBRIDGE
SHALOM BARANES ASSOCIATES



HECHT'S REDEVELOPMENT
(PROPOSED HOUSING COMPONENT)

HECHT'S REDEVELOPMENT
(PROPOSED OFFICE / RETAIL COMPONENT)

CHEVY CHASE CENTER
(PROPOSED OFFICE / RETAIL)

5401 WESTERN AVE.
(PROPOSED 78.75' BUILDING HEIGHT)

5401 WESTERN AVE.

WASHINGTON, D.C.

STONEBRIDGE

SHALOM BARANES ASSOCIATES

WESTERN AVENUE
(120' R/W)
P.B. 63 P. 29

167.0'

#5401
3 STORY BRICK
OFFICE BUILDING
W/BASEMENT
FINISHED FLOOR
324.8'

LOT 805
SQUARE 166.5
17,000.43 ACRES
R-2220.52
R-334.00

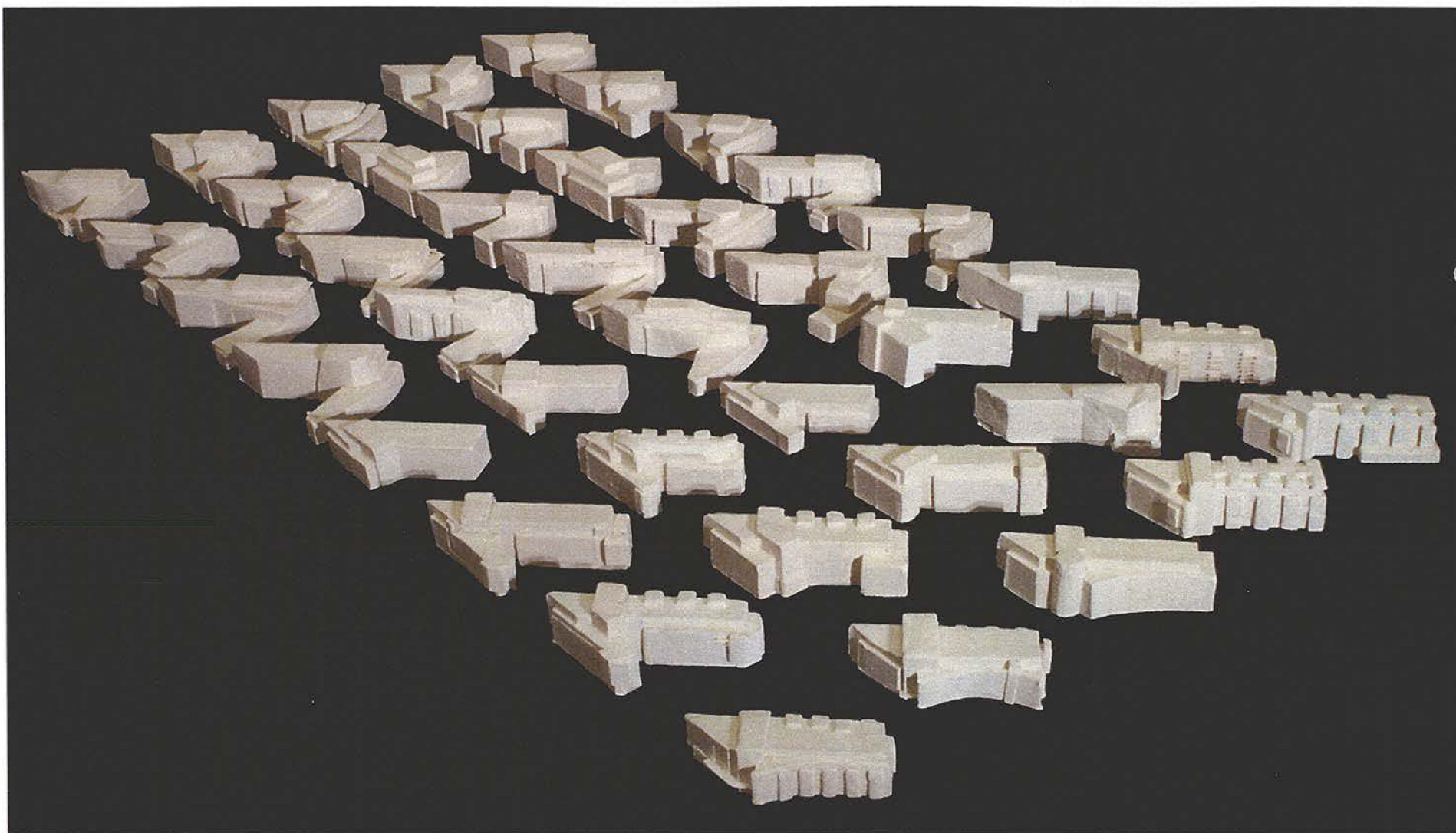
#5425
1 STORY BRICK
BUILDING
348.73

2 STORY BRICK
BUILDING
348.73

MILITARY ROAD, N.W.
(90' R/W)
L. 92 F. 117

CONCRETE PAVEMENT BRICK CONCRETE PAVEMENT

STONE RETAINING WALL



5401 WESTERN AVE.

W A S H I N G T O N , D C .

STONEBRIDGE

SHALOM BARANES ASSOCIATES



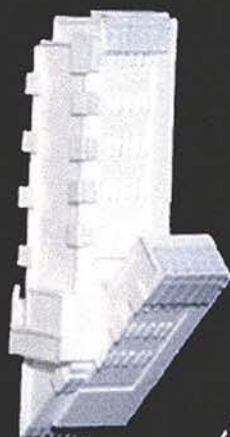
OCT. 2, 2001 - NEIGHBORHOOD WORKING GROUP
100 FT. HEIGHT
125,000 SQ. FT.



MAR. 22, 2002 - PUD APPLICATION
100 FT. HEIGHT
125,000 SQ. FT.



NOV. 8, 2001 - NEIGHBORHOOD WORKING GROUP
100 FT. HEIGHT
125,000 SQ. FT.



AUG. 19, 2002 - PRE-HEARING SUBMISSION
100 FT. HEIGHT
125,000 SQ. FT.



JAN. 7, 2002 - NEIGHBORHOOD WORKING GROUP
100 FT. HEIGHT
125,000 SQ. FT.



OCT. 25, 2002 - REVISED PRE-HEARING SUBMISSION
100 FT. HEIGHT
125,000 SQ. FT.



NORTHWEST ELEVATION
WESTERN AVENUE

5401 WESTERN AVE.

W A S H I N G T O N , D C .

STONEBRIDGE

SHALOM BARANES ASSOCIATES

0 10' 20' 40'



SOUTHEAST ELEVATION
FROM COURTYARD



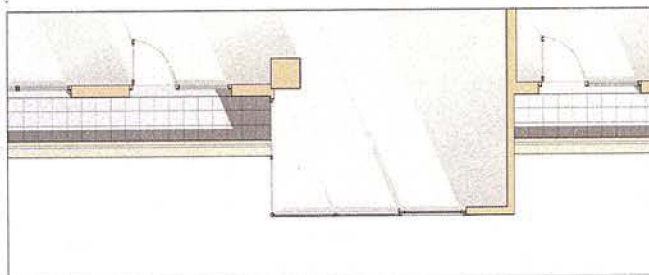
5401 WESTERN AVE.

WASHINGTON, D.C.

STONEBRIDGE

SHALOM BARANES ASSOCIATES





5401 WESTERN AVE.
WASHINGTON, D.C.

STONEBRIDGE
SHALOM BARANES ASSOCIATES

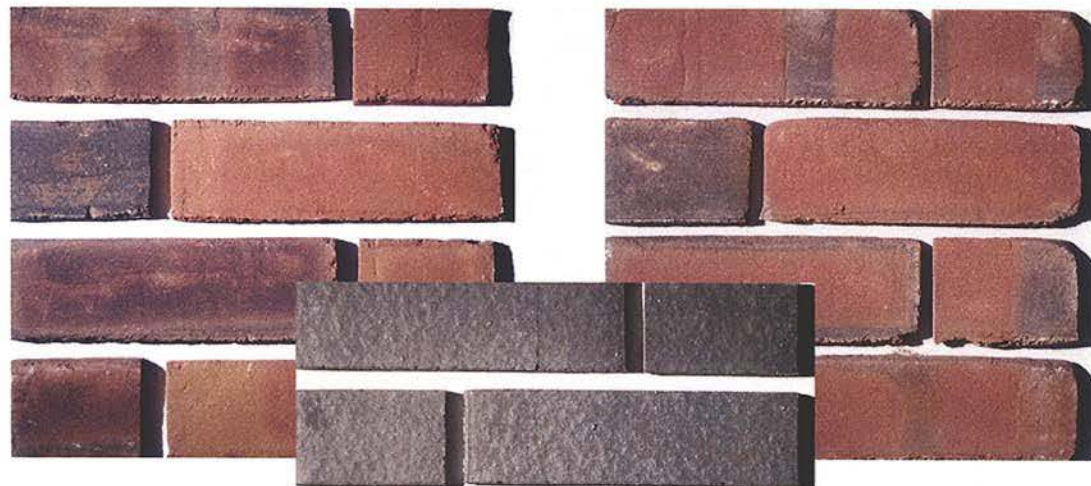


5401 WESTERN AVE.

WASHINGTON, D.C.

STONEBRIDGE

SHALOM BARANES ASSOCIATES



5401 WESTERN AVE.

WASHINGTON, D.C.

STONEBRIDGE

SHALOM BARANES ASSOCIATES